

A graphic for a Kindergarten Back To School Night. The background is a light blue grid. In the center is a large, red, irregular shape resembling a splash or a drop. Inside this red shape, the text "Kindergarten Back To School Night" is written in a white, rounded, sans-serif font, with "Night" on a new line. Below the main title, "2024-2025" is written in the same font. Surrounding the red shape are various school supplies: a purple pencil at the top left, a blue pencil at the top center, a yellow pencil on the left, a green pencil at the bottom left, and a purple pencil at the bottom right. There are also several paper clips in yellow, purple, and green, and colorful wavy lines in blue, yellow, and green scattered around the scene.

Kindergarten
Back To School
Night
2024-2025

Kindergarten Team



Mrs. Garcia-
IA



Ms. Monica-
IA



Ms. Dubbs- IA



Mr.
Nicholas IA



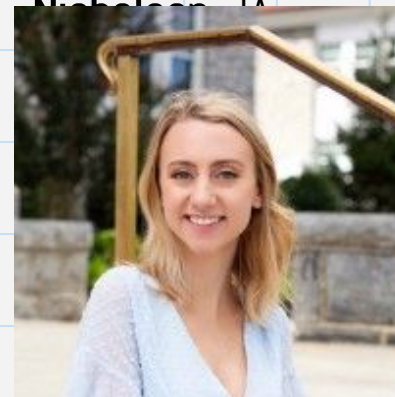
Ms. Fakir- Special
education IA



Clara Villalobos
ESOL Specialists

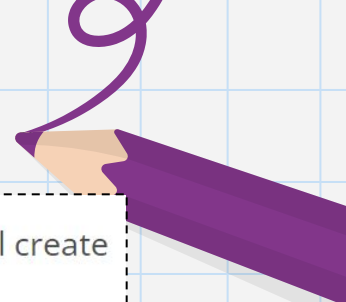
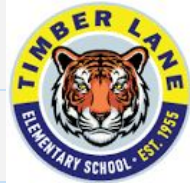


Ms. Yenouskas-
special education



Ms. Libby- special
education

Timber Lane Vision Statement



By providing an inclusive learning environment that embraces the contributions of each child, we will create a community of empowered lifelong learners and critical thinkers.

Timber Lane Beliefs

- We commit to building supportive partnerships with families and the community.
- We believe all students are capable of meeting high expectations.
- We guarantee access to meaningful and rigorous learning experiences for ALL.
- We will foster a love of learning and an awareness of self/others.
- We will guarantee access to a safe and welcoming community that values relationships and students' strengths/identity.
- We will provide responsive instruction to meet students where they are both social-emotionally and academically.

Everyday Items



A snack and labeled water bottle



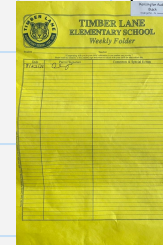
Change of clothes in your child's backpack



Your child should wear sneakers to school on days they have PE



Please check your child's backpack on Wednesday's for the Wednesday folder



- Label all items sent to school!

Breakfast and Lunch

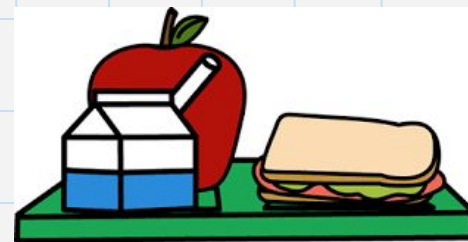
*This year student's will be charged for both breakfast and lunch

*Breakfast: \$1.75

*Lunch: \$3.25

*Apply for free and reduced breakfast and lunch

*If you do not want your child to buy breakfast for school, please let your child's teacher know

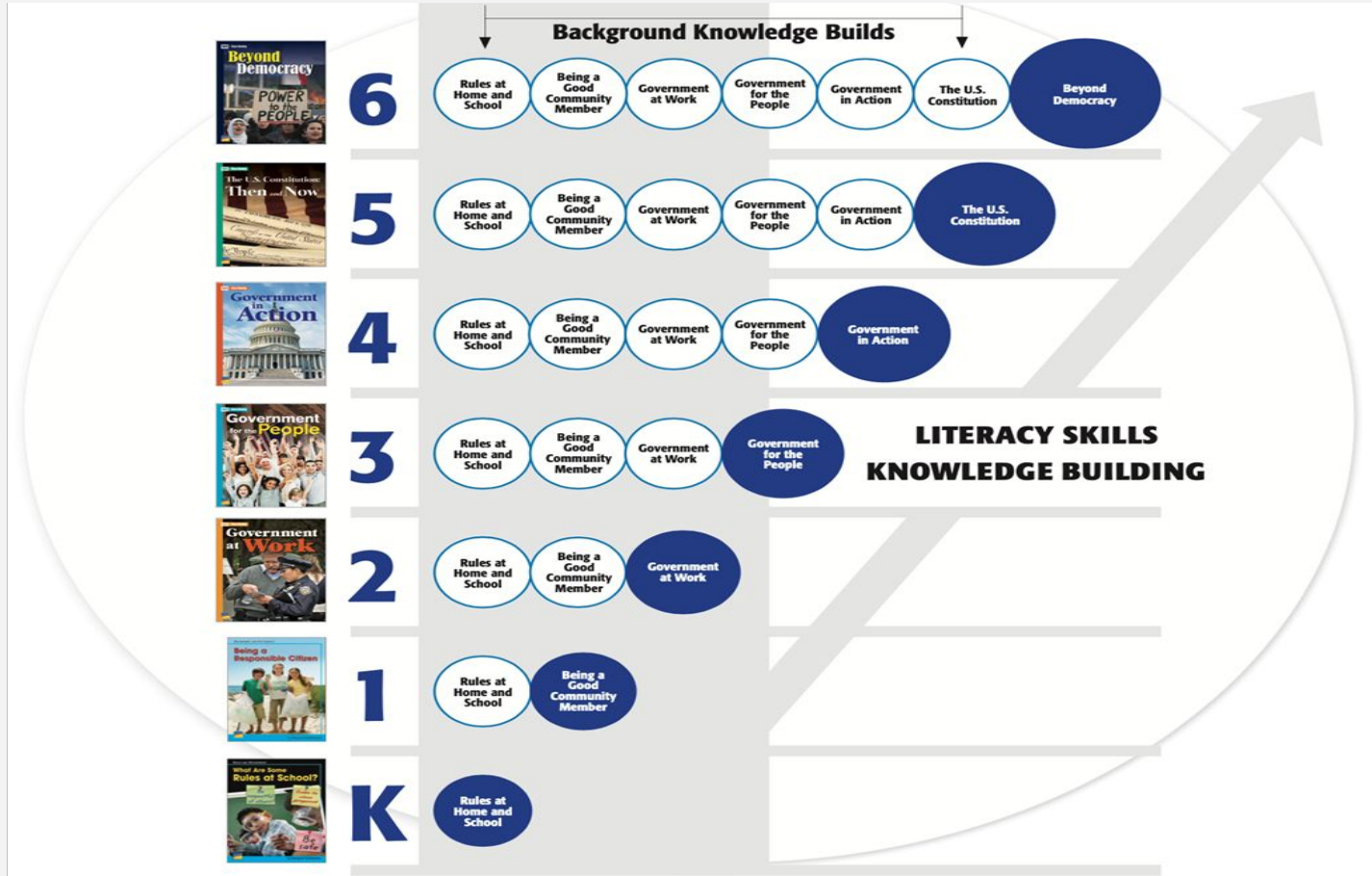


Our New Literacy Curriculum for K-6



Unit	Knowledge Strand
1	Life Science
2	Character Matters
3	Government and Citizenship
4	Perspectives in Literature
5	Technology and Society
6	Themes Across Cultures
7	History, Culture, and Geography
8	Earth Science
9	Economics

Growing Knowledge over Time





Science Year at a Glance: Kindergarten

Quarter 1

Observations, 5 senses,
shadows, pumpkins

Quarter 2

Squirrels, living/nonliving,
weather, water phases

Quarter 3

Water uses, pushes & pulls,
conservation

Quarter 4

Ants, life cycle,
change over time



Concept Based Learning

- Connecting a big idea to our learning through different subjects
- First concept- Community!
- Please send your child's teacher a picture of your family community!
- **We will have a community potluck celebration on Friday, October 25 from 11am-12pm.**



Social Emotional Learning

*Second Step



*Portrait of a Graduate



Specials

- Monday-Friday 12:30-1:30

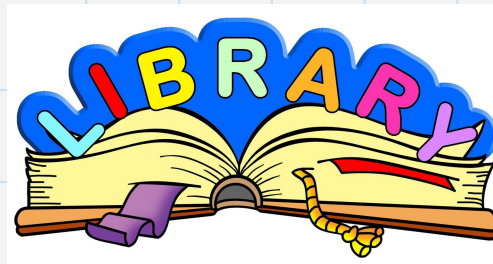
*P.E.

*Music

*Library

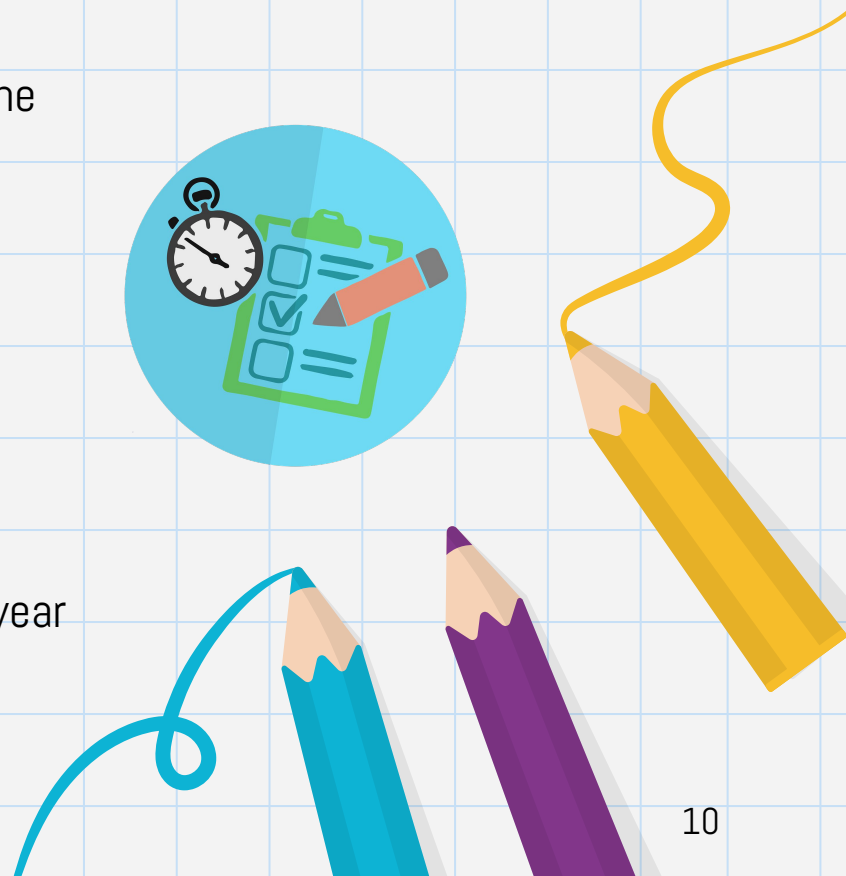
*Guidance

*Art



ASSESSMENTS In Kindergarten

- *Most formal assessments will be given one-on-one with the classroom teacher
- *VALS-Language arts
- *EMAS-Math (VKRP) and Social/Emotional Skills (CBRS)
- *Social Emotional Learning Screener
- *Informal assessments will given throughout the year



iPads

*All students will have a school issued iPad at school

*iPads will stay at school, unless otherwise told by your child's classroom teacher

 schoolology®



LEXIA READING®
CORE5



When Students Are Sick

FCPS protocols have been updated since the height of the pandemic. Students with a light cough, runny nose, or stomach ache **can** come to school. Students will no longer be sent home for these symptoms alone.



Send to school:

- Light cough, sneezing, runny nose
- Mild stomach ache
- Was sick but now fever-free for 24 hours



Keep at Home:

- Fever
- Vomiting or diarrhea
- Severe illness

Student Attendance

Attendance is taken each day during morning meeting. School begins at 8:50 and ends at 3:35. Learning begins right away, so it is important to arrive on time!

Please call the attendance line (703) 206-5331 each day your child will be absent, tardy, or leaving early.

Every hour counts! If your student has an appointment for part of the day, we will work with you to arrange for a late arrival or early dismissal. **Please plan to send your student to school for any part of the day they can attend.**



©Attendance Works

Attend Today, Achieve Tomorrow



#schooleveryday



©Attendance Works

Asista Hoy, Tenga Éxito Mañana



#schooleveryday

Report Cards

***All students will receive an interim report for the 1st quarter**

***No report cards for 1st quarter in Kindergarten**





Conferences

When : Week of November 4

Who: All Kindergarten parents

*Kindergarten parent-teacher conferences are mandatory!

*Your child's teacher will reach out to schedule your conference!



How can families get involved?

- Join the PTA!
- Volunteer in your child's classroom (classroom guest reader sign ups will be coming out soon)
- Volunteer in the school (library, office, Timber Lane VIP)
- Eat lunch with your child
- Take part in after school activities (Bingo, Literacy Night, Math Night)
- Read to and with your child
- Talk with your child about their day
- Family Resource Center



Thank You!

*If you have specific questions, please find your child's teacher!



Ms.
Jonovich



Ms. Guiliani

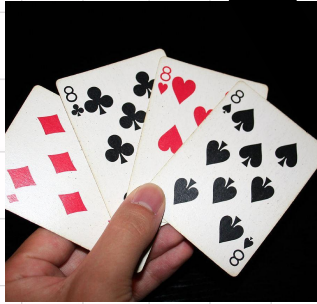


Ms. Nelson



Ms.
Chacon

Math Games



Playing Cards

Attributes
Number recognition
Patterns



Board Games

Familiarity with dice
Counting
Strategy



Other games

Matching
Patterns
Number sense

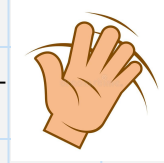
Kindergarten Procedures



Arrival:

- *School building opens at 8:30am
- *Students will be sent to the gym if they arrive before 8:40 am
- *Students will be able to enter the classroom at 8:40 am
- *Students will be brought to the classroom by an adult from the gym

Please call the office if your child has a change of dismissal plans.



Dismissal:

- *All kindergarten students must be picked up by an adult or a person on the emergency care paper
- *Bus riders will be placed on the busses by the kindergarten teachers

Year at a Glance- what we teach in K



Reading

- *learning letter names and sounds
- *learn book handling skills
- *read familiar books and poems with accuracy and fluency

Math

- *count forward to 100
- *count backward from 30
- *read and write numbers within 100



Communicator



Collaborator



Ethical and
Global Citizen



Creative and
Critical Thinker



Goal-Directed
and Resilient
Individual

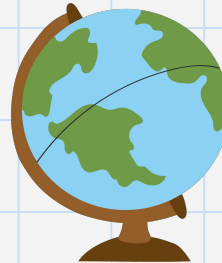
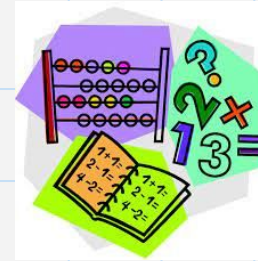
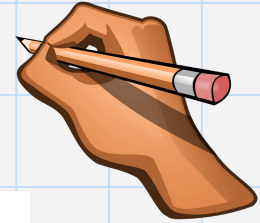
Portrait of a Graduate

All classrooms will choose 2 attributes to focus on this year. Kindergarten will focus on one attribute.



Year at a Glance- what we teach in K

- Language arts
 - *Reading Workshop
 - *Writing Workshop
- Math Workshop
- Social Studies/Science
- Concept Based Instruction
- Social/Emotional Learning
 - *Second Step
 - *Portrait of a Graduate



Kindergarten Team



Ms. Jonovich



Ms. Nelson



Ms. Guilliani



Ms. Chacon



Ms. Yenouskas